

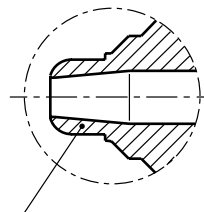
Z 1031/...

230 V~

◀+ = Fe-CuNi

► Info

CuCoBe-Legierung  
CuCoBe-alloy  
Alliage CuCoBe



max. °C	Watt	Typ	D	L <sub>1</sub>	Nr./No.
280	250	..27 ..	<b>27</b>	<b>49</b>	Z1031/27x 49
	315	..32 ..	<b>32</b>	<b>61</b>	32x 61
	400	..38 ..	<b>38</b>	<b>75</b>	38x 75
		..45 ..	<b>45</b>	<b>88</b>	45x 88
		..56x81..	<b>56</b>	<b>81</b>	56x 81
		..56 ..		<b>112</b>	56x112

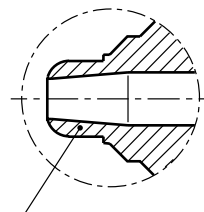
Z 1031 T/...

230 V~

◀+ = Fe-CuNi

► Info

Spezial Molybdänlegierung  
Special molybdenum alloy  
Alliage molybdène spécial



max. °C	Watt	Typ	D	L <sub>1</sub>	Nr./No.
360	315	..32 ..	<b>32</b>	<b>61</b>	Z1031T/32x 61
	400	..38 ..	<b>38</b>	<b>75</b>	38x 75
		..45 ..	<b>45</b>	<b>88</b>	45x 88
		..56x81..	<b>56</b>	<b>81</b>	56x 81
		..56 ..		<b>112</b>	56x112

This is trial version  
www.adultpdf.com